

LIVONIA, MI

TWO STORY RETAIL & OFFICE



OFFICE FOR LEASE

Across from Laurel Park Place Mall

2250 to 6649 sq ft available

Whitehill Enterprises - (248) 668-2670 - info@whitehillco.com

FACT SHEET

LAUREL POINTE

37699 SIX MILE RD.
LIVONIA, MICHIGAN 48152

LOCATION: UNIQUE OPPORTUNITY FOR BUILDING SIGNAGE
CORNER OF SIX MILE ROAD AND LAUREL PARK DRIVE
ACROSS FROM UPSCALE LAUREL PARK MALL
SHARES SITE WITH BUFFALO WILD WINGS

RETAIL TENANTS: JIMMY JOHN'S
AT&T
FLAGSTAR BANK

OFFICE SIZE:	<u>SUITE 200</u>	<u>SUITE 240</u>
	4,399 SQ. FT.	2,250 SQ. FT.
	17 OFFICES	5 OFFICES
	2 CONFERENCE	1 CONFERENCE
	KITCHEN	KITCHEN

THESE ADJACENT SUITES CAN BE COMBINED FOR 6649 SQ. FT.

PROJECT SIZE: 2 STORY MIXED USE
21,534 SQ FT

DEMOGRAPHICS:	<u>RADIUS</u>	<u>POPULATION</u>	<u>AVE. HH INCOME</u>
	1	3,932	\$88,944
	2	32,512	\$92,282
	3	81,652	\$88,494
	5	186,046	\$84,228

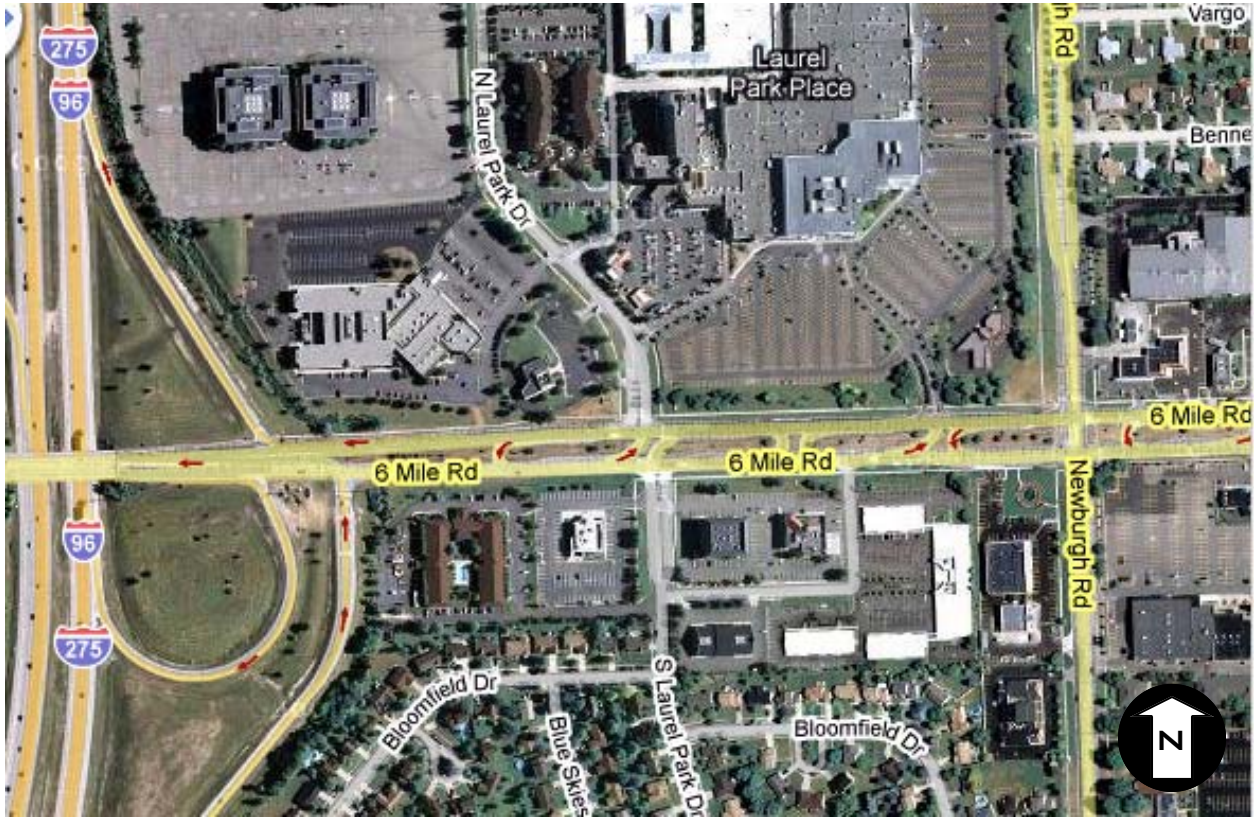
FOR ADDITIONAL INFORMATION, CONTACT:

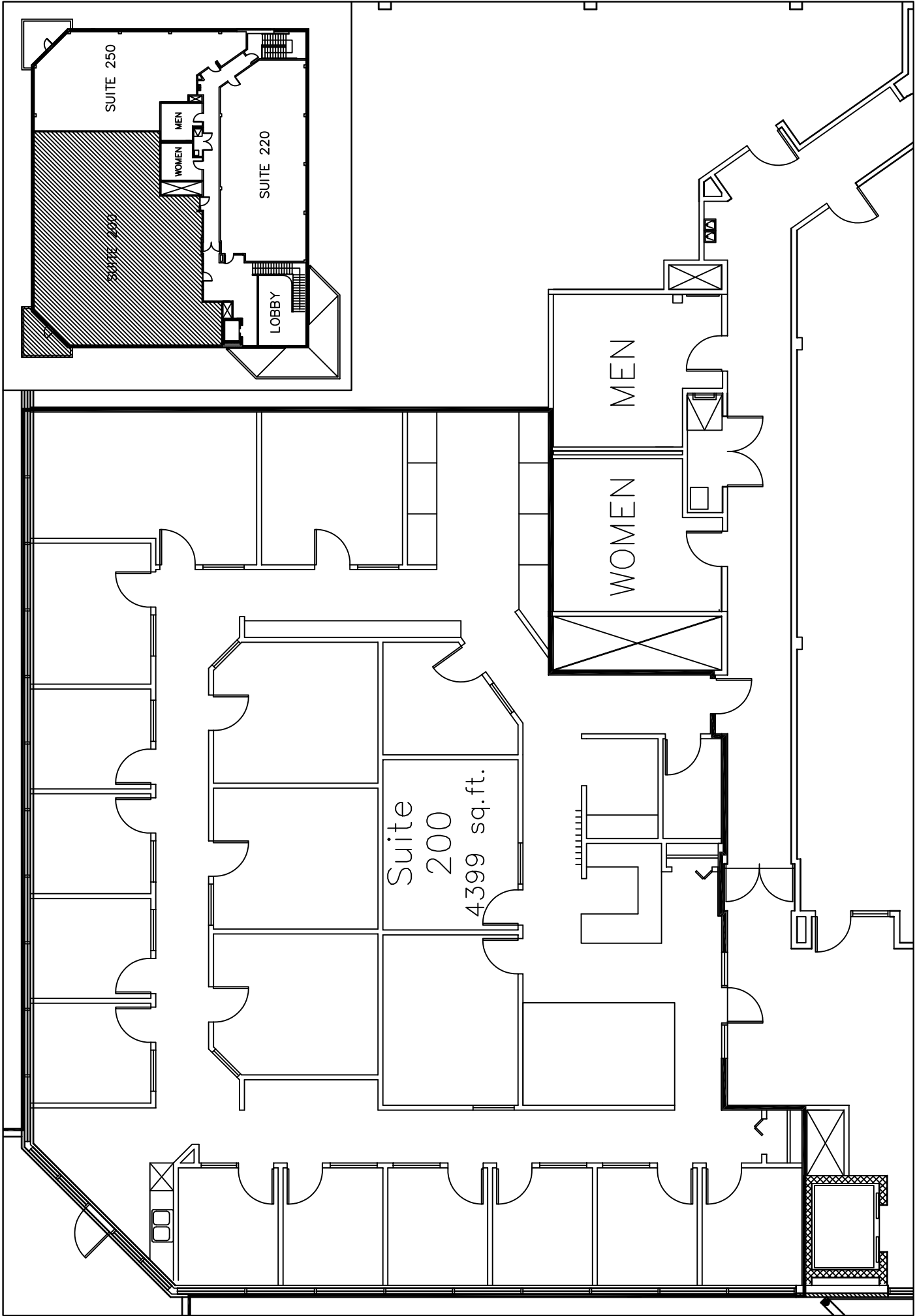
SHARON ULMER
(248) 668-2673
sulmer@whitehillco.com

LOCATOR MAP



AERIALS



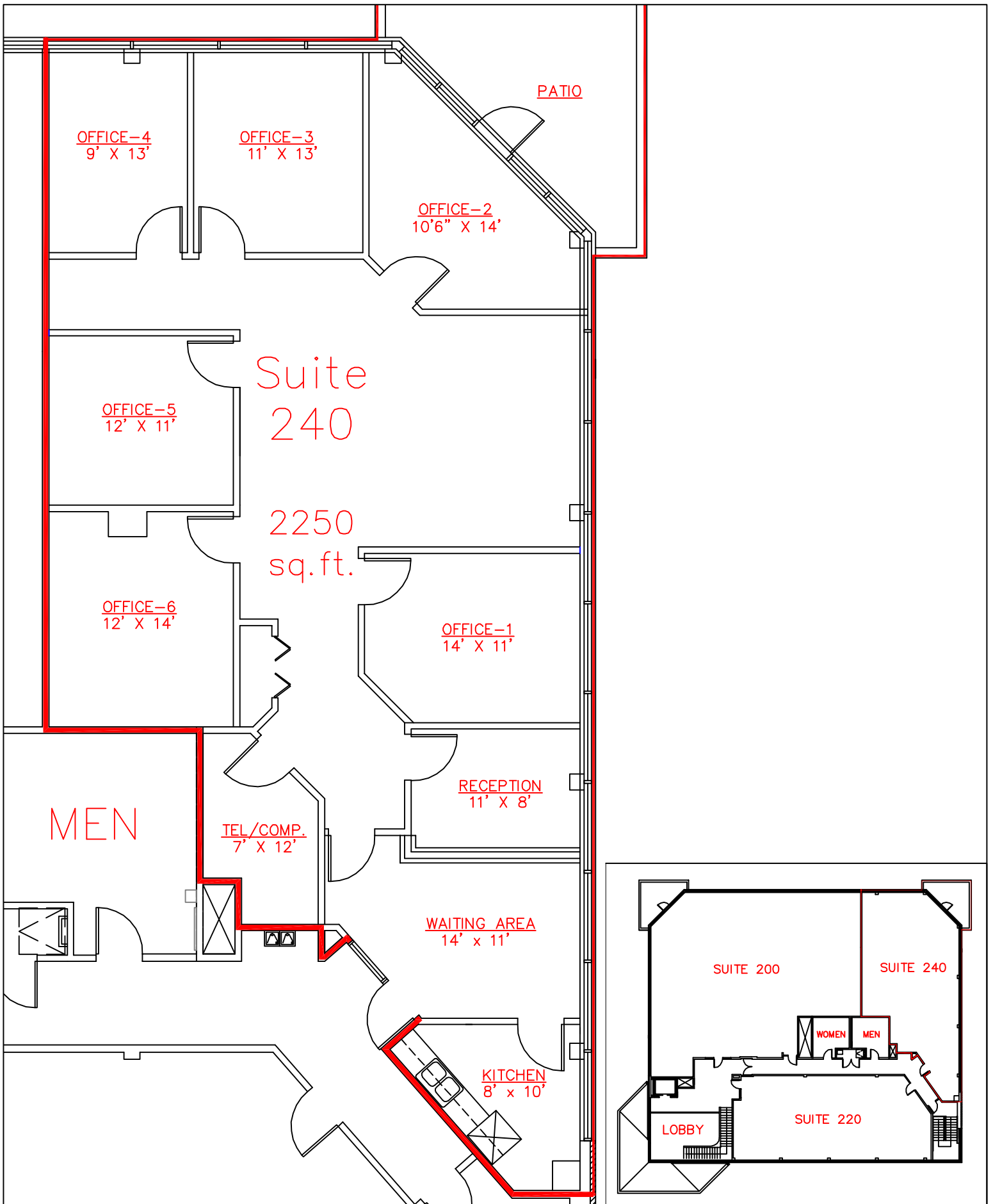


Scale: 3/32" = 1'



LAUREL POINTE
SUITE 200

Whitehill



Whitehill

LAUREL POINTE
SUITE 240

Scale: 1/8" = 1'

